

1 2 3 4 5 6 7 8

A

B

C

D

E

F

RUSCOOL
ELECTRONICS LIMITED

LANDING GEAR

UP

DOWN

N

L

R

GEAR UNSAFE

CHECK DOWN

LIGHT TEST

+12V to turn on indicator
- (RIGHT) BLUE WIRE

+12V to turn on indicator
- (NOSE) WHITE WIRE

+12V to turn on indicator
- (LEFT) BLACK WIRE

+12V to turn on indicator
- (UNSAFE) RED WIRE

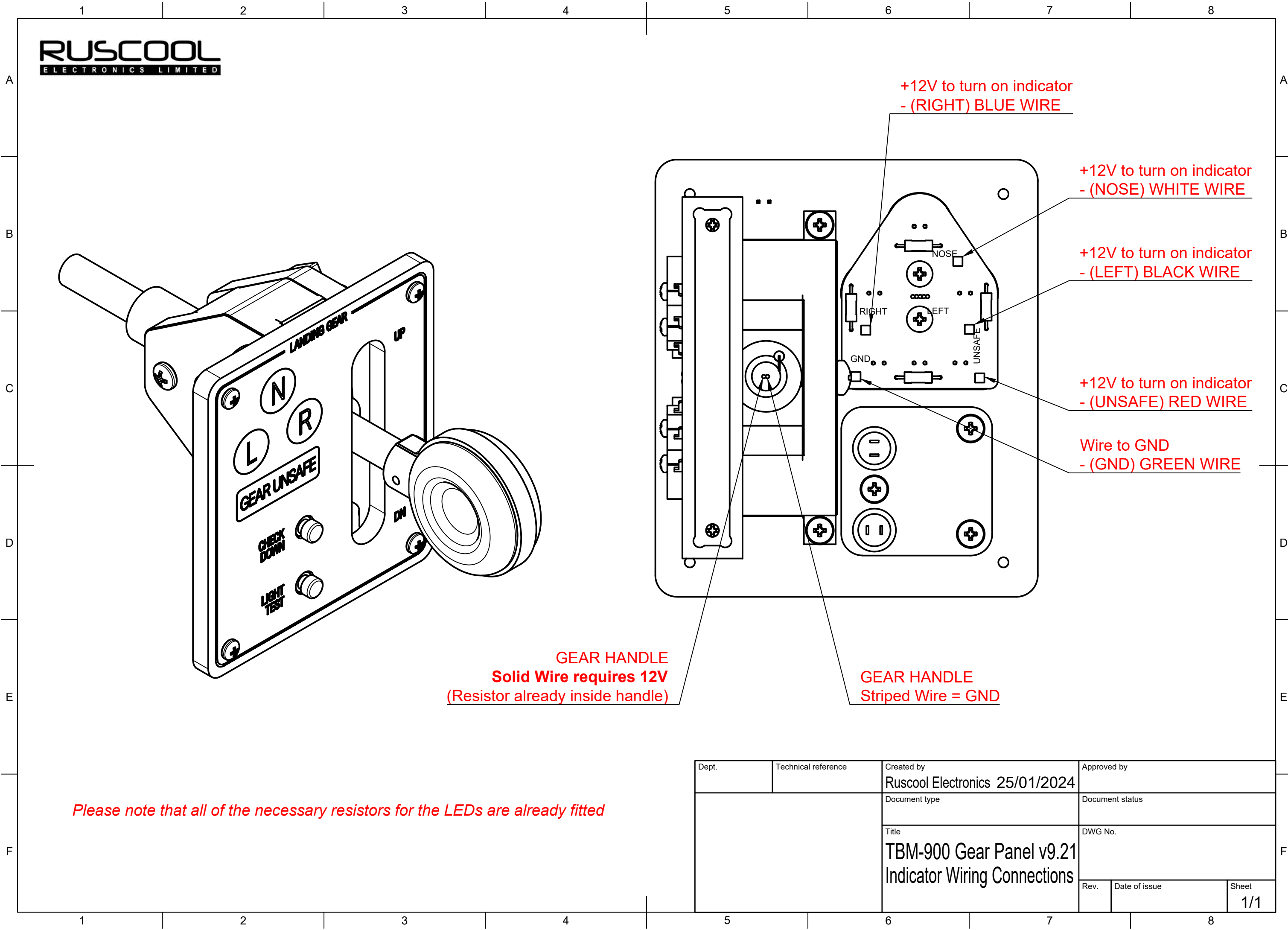
Wire to GND
- (GND) GREEN WIRE

GEAR HANDLE
Solid Wire requires 12V
(Resistor already inside handle)

GEAR HANDLE
Striped Wire = GND

Please note that all of the necessary resistors for the LEDs are already fitted

Dept.	Technical reference	Created by Ruscool Electronics 25/01/2024	Approved by	
		Document type	Document status	
		Title TBM-900 Gear Panel v9.21 Indicator Wiring Connections		
		Rev.	Date of issue	Sheet 1/1



1 2 3 4 5 6 7 8

A

B

C

D

E

F

RUSCOOL
ELECTRONICS LIMITED

LANDING GEAR

UP

DOWN

N

L

R

GEAR UNSAFE

CHECK DOWN

LIGHT TEST

+12V to turn on indicator
- (RIGHT) BLUE WIRE

+12V to turn on indicator
- (NOSE) WHITE WIRE

+12V to turn on indicator
- (LEFT) BLACK WIRE

+12V to turn on indicator
- (UNSAFE) RED WIRE

Wire to GND
- (GND) GREEN WIRE

GEAR HANDLE
Solid Wire requires 12V
(Resistor already inside handle)

GEAR HANDLE
Striped Wire = GND

Please note that all of the necessary resistors for the LEDs are already fitted

Dept.	Technical reference	Created by Ruscool Electronics 25/01/2024	Approved by	
		Document type	Document status	
		Title TBM-900 Gear Panel v9.21 Indicator Wiring Connections		
		Rev.	Date of issue	Sheet 1/1

1 2 3 4 5 6 7 8

1 2 3 4 5 6 7 8

A

B

C

D

E

F

RUSCOOL
ELECTRONICS LIMITED

LANDING GEAR

UP

DOWN

N

L

R

GEAR UNSAFE

CHECK DOWN

LIGHT TEST

+12V to turn on indicator
- (RIGHT) BLUE WIRE

+12V to turn on indicator
- (NOSE) WHITE WIRE

+12V to turn on indicator
- (LEFT) BLACK WIRE

+12V to turn on indicator
- (UNSAFE) RED WIRE

Wire to GND
- (GND) GREEN WIRE

GEAR HANDLE
Solid Wire requires 12V
(Resistor already inside handle)

GEAR HANDLE
Striped Wire = GND

Please note that all of the necessary resistors for the LEDs are already fitted

Dept.	Technical reference	Created by Ruscool Electronics 25/01/2024	Approved by	
		Document type	Document status	
		Title TBM-900 Gear Panel v9.21 Indicator Wiring Connections		
		Rev.	Date of issue	Sheet 1/1

1 2 3 4 5 6 7 8

RUSCOOL
ELECTRONICS LIMITED

GEAR HANDLE
Solid Wire requires 12V
(Resistor already inside handle)

GEAR HANDLE
Striped Wire = GND

Please note that all of the necessary resistors for the LEDs are already fitted

Dept.	Technical reference	Created by Ruscool Electronics 25/01/2024	Approved by	
		Document type	Document status	
		Title TBM-900 Gear Panel v9.21 Indicator Wiring Connections		
		Rev.	Date of issue	Sheet 1/1